

# Natural changes of population 1961 – 2022

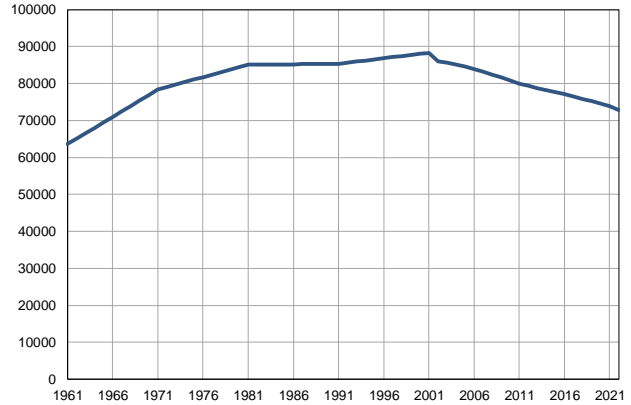
Profile  
July 2023

## Sremska Mitrovica

	1961	2022
Population size	63634	72811
Livebirths, Number	1540	623
Deaths, Number	790	1322
Natural increase, Number	750	-699
Infants deaths, Number	127	6
Livebirths, per 1,000 population	24	9
Deaths, per 1,000 population	12	18
Natural increase, per 1,000 population	12	-10
Infants deaths, per 1,000 livebirths	83	10

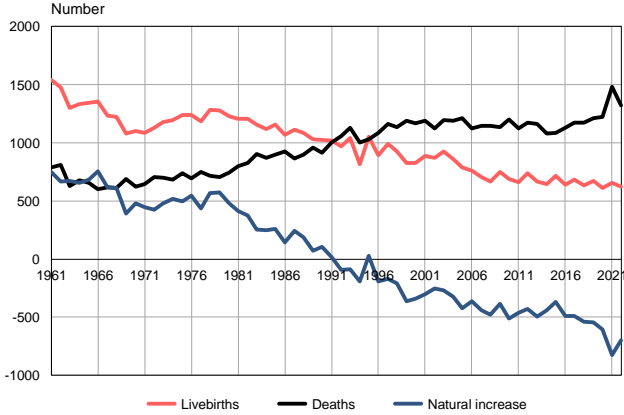
Source: Vital Statistics, SORS

Population size, 1961–2022



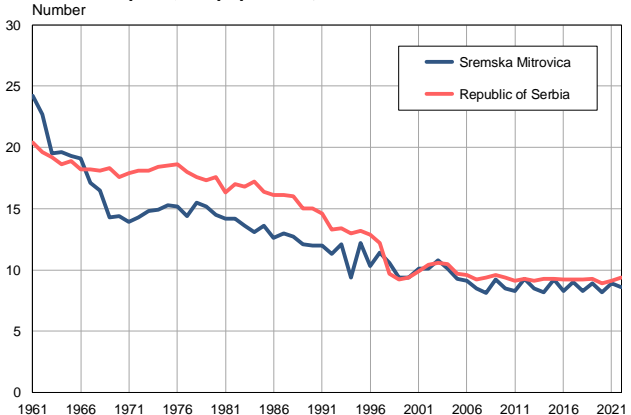
Source: Vital Statistics, SORS

Livebirths, deaths and natural increase, 1961–2022



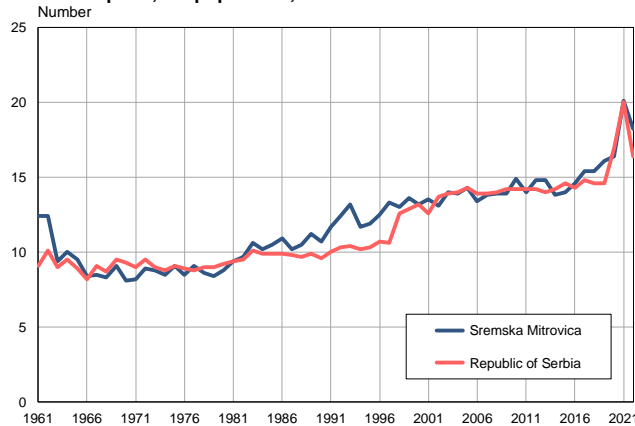
Source: Vital Statistics, SORS

Livebirths per 1,000 population, 1961–2022



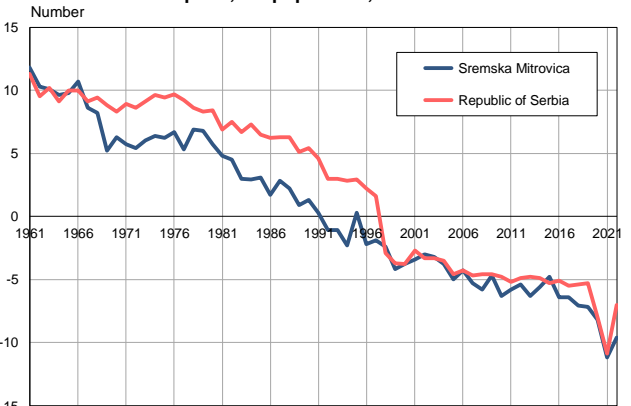
Source: Vital Statistics, SORS

Deaths per 1,000 population, 1961–2022



Source: Vital Statistics, SORS

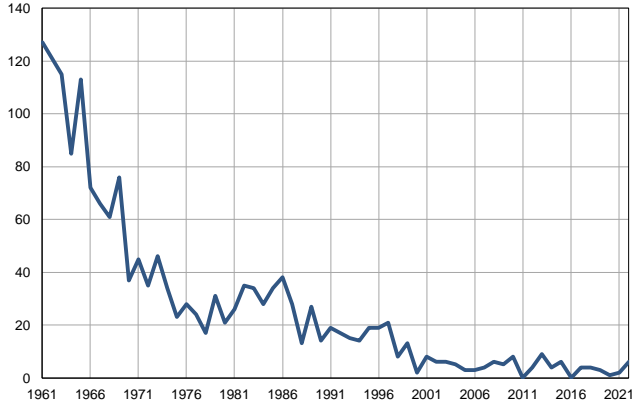
Natural increase per 1,000 population, 1961–2022



Source: Vital Statistics, SORS

**Infants deaths, 1961–2022**

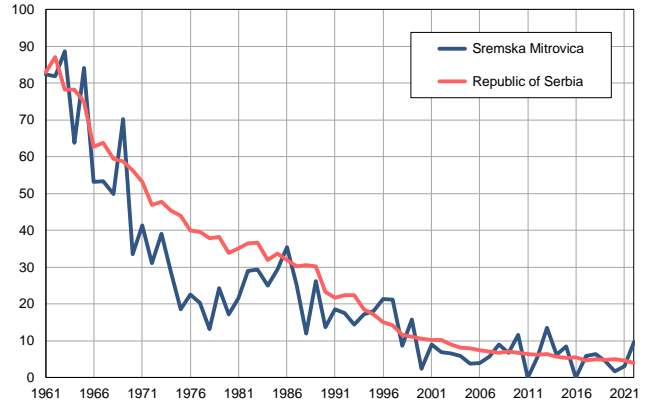
Number



Source: Vital Statistics, SORS

**Infants deaths per 1,000 livebirths, 1961–2022**

Number



Source: Vital Statistics, SORS

**Table. Natural changes of population, Sremska Mitrovica**

Year	Number of population	Livebirths	Deaths	Natural increase	Infants deaths	per 1000 population			Infant deaths per 1000 livebirths
						Livebirths	Deaths	Natural increase	
1961	63634	1540	790	750	127	24.2	12.4	11.8	82.5
1962	65110	1477	808	669	121	22.7	12.4	10.3	81.9
1963	66585	1297	626	671	115	19.5	9.4	10.1	88.7
1964	68061	1332	679	653	85	19.6	10.0	9.6	63.8
1965	69537	1343	658	685	113	19.3	9.5	9.8	84.1
1966	71013	1356	599	757	72	19.1	8.4	10.7	53.1
1967	72488	1236	617	619	66	17.1	8.5	8.6	53.4
1968	73964	1223	614	609	61	16.5	8.3	8.2	49.9
1969	75440	1082	690	392	76	14.3	9.1	5.2	70.2
1970	76915	1104	625	479	37	14.4	8.1	6.3	33.5
1971	78391	1086	642	444	45	13.9	8.2	5.7	41.4
1972	79064	1128	705	423	35	14.3	8.9	5.4	31.0
1973	79739	1180	700	480	46	14.8	8.8	6.0	39.0
1974	80412	1197	681	516	34	14.9	8.5	6.4	28.4
1975	81085	1238	740	498	23	15.3	9.1	6.2	18.6
1976	81760	1239	693	546	28	15.2	8.5	6.7	22.6
1977	82435	1184	751	433	24	14.4	9.1	5.3	20.3
1978	83108	1285	717	568	17	15.5	8.6	6.9	13.2
1979	83781	1276	705	571	31	15.2	8.4	6.8	24.3
1980	84455	1228	746	482	21	14.5	8.8	5.7	17.1
1981	85129	1208	797	411	26	14.2	9.4	4.8	21.5
1982	85149	1205	829	376	35	14.2	9.7	4.5	29.0
1983	85169	1155	902	253	34	13.6	10.6	3.0	29.4
1984	85189	1118	871	247	28	13.1	10.2	2.9	25.0
1985	85209	1156	898	258	34	13.6	10.5	3.1	29.4
1986	85228	1071	925	146	38	12.6	10.9	1.7	35.5
1987	85248	1111	867	244	28	13.0	10.2	2.8	25.2
1988	85268	1083	896	187	13	12.7	10.5	2.2	12.0
1989	85288	1030	958	72	27	12.1	11.2	0.9	26.2
1990	85308	1023	915	108	14	12.0	10.7	1.3	13.7
1991	85328	1021	1002	19	19	12.0	11.7	0.3	18.6
1992	85630	969	1060	-91	17	11.3	12.4	-1.1	17.5
1993	85931	1042	1130	-88	15	12.1	13.2	-1.1	14.4
1994	86232	813	1005	-192	14	9.4	11.7	-2.3	17.2
1995	86535	1054	1028	26	19	12.2	11.9	0.3	18.0
1996	86836	894	1085	-191	19	10.3	12.5	-2.2	21.3
1997	87138	990	1162	-172	21	11.4	13.3	-1.9	21.2
1998	87439	925	1136	-211	8	10.6	13.0	-2.4	8.6
1999	87742	826	1191	-365	13	9.4	13.6	-4.2	15.7
2000	88043	827	1166	-339	2	9.4	13.2	-3.8	2.4
2001	88344	888	1189	-301	8	10.1	13.5	-3.4	9.0
2002	85963	872	1126	-254	6	10.1	13.1	-3.0	6.9
2003	85653	927	1197	-270	6	10.8	14.0	-3.2	6.5
2004	85205	861	1187	-326	5	10.1	13.9	-3.8	5.8
2005	84604	788	1212	-424	3	9.3	14.3	-5.0	3.8

**Table. Natural changes of population, Sremska Mitrovica**

Year	Number of population	Livebirths	Deaths	Natural increase	Infants deaths	per 1000 population			Infant deaths per 1000 livebirths
						Livebirths	Deaths	Natural increase	
2006	83939	763	1126	-363	3	9.1	13.4	-4.3	3.9
2007	83205	708	1147	-439	4	8.5	13.8	-5.3	5.6
2008	82373	666	1144	-478	6	8.1	13.9	-5.8	9.0
2009	81613	749	1134	-385	5	9.2	13.9	-4.7	6.7
2010	80881	689	1202	-513	8	8.5	14.9	-6.3	11.6
2011	80014	663	1124	-461	0	8.3	14.0	-5.8	0.0
2012	79385	741	1172	-431	4	9.3	14.8	-5.4	5.4
2013	78776	668	1162	-494	9	8.5	14.8	-6.3	13.5
2014	78186	642	1081	-439	4	8.2	13.8	-5.6	6.2
2015	77667	718	1087	-369	6	9.2	14.0	-4.8	8.4
2016	77123	638	1129	-491	0	8.3	14.6	-6.4	0.0
2017	76499	686	1175	-489	4	9.0	15.4	-6.4	5.8
2018	75873	631	1172	-541	4	8.3	15.4	-7.1	6.3
2019	75241	670	1213	-543	3	8.9	16.1	-7.2	4.5
2020	74609	614	1220	-606	1	8.2	16.4	-8.2	1.6
2021	73884	656	1482	-826	2	8.9	20.1	-11.2	3.0
2022	72811	623	1322	-699	6	8.6	18.2	-9.6	9.6

Source: Vital Statistics, SORS

## Definitions

### Population size

Number of population in the respective year. The data on the number of population in 1961, 1971, 1981 and 1991 are census data, while for the inter-census years the number of population was calculated as an average inter-census difference. From 2002 are given the population estimates that were calculated according to the census of population results and the annual statistics of natural mechanical population movements.

### Livebirths

Absolute number of live births in the course of a year. Live born child means a child giving vital signs after birth (breathing, i.e. heartbeat), even for the shortest time, regardless the mother's pregnancy duration.

### Deaths

Absolute number of deaths in the course of a year. Deceased is a person that whenever after having been born live, shows permanently stopped vital signs.

### Natural increase

Natural population increase is the number of live births minus the number of deaths.

### Infants deaths

Absolute number of infants deaths in the course of a year. Deceased infant is a child that after having been born live and before aged one year, shows permanently stopped vital signs.

### Livebirths, per 1 000 population

Livebirths rate is the ratio of the number of live births and the population size in the respective year. The number of live births is divided by the population size and then multiplied by 1000.

### Deaths, per 1 000 population

General mortality rate represents the ratio between the number of deaths and the population size in the respective year. The number of deaths is divided by population size and then multiplied by 1000.

### Natural increase, per 1 000 population

Natural population increase rate is the difference between the number of live births and the number of deaths, in relation to the population size in the respective year.

Natural population increase rate = (number of live births - number of deaths) / population size \* 1000

### Infants deaths, per 1 000 livebirths

Infant mortality rate is the ratio of deceased children under 1 year of age and live births in the respective year. The mortality rate is expressed per 1000 live births.

Infant mortality rate = (number of deceased children under 1 year of age / number of live births) \* 1000

## Additional info:



Download all database data in Excel format:

[Data](#)



DevInfo profiles:

[devinfo.stat.gov.rs/SerbiaProfileLauncher/?lang=en](http://devinfo.stat.gov.rs/SerbiaProfileLauncher/?lang=en)



DevInfo online database:

[devinfo.stat.gov.rs/vitalna](http://devinfo.stat.gov.rs/vitalna)



For additional information or questions please contact:

[devinfo@stat.gov.rs](mailto:devinfo@stat.gov.rs)